

### Important messages for this week:

Year 2 have been getting into the football spirit this afternoon. We have been learning about what the Euros are, and where in the 7 continents some of the countries are located. The children have thoroughly enjoyed singing some of the football songs and designing flags and badges.



Attendance this week is 94.42% which is really low =( please ensure you child is in school where possible. We have had a lot of children who have given reasons for absence that are not appropriate reasons for missing school.

### Mentions:

**Foundation 2:** F2KE Robin and Kai

**Year 1:** 1AS Lucy and Mason

**Year 2:** 2SB Zlata and Alissa

**Year 3:** 3MS Mara and Jayden

**Year 4:** 4EP Lucy and Hope

**Year 5:** 5LB Yasmin and Myanie

**Year 6:** 6EB Mia and Corban

**F2CA** Beatrix and M

**1LS** Nadia and Esmee

**2EB** Faith and Ryan

**3HB** Tommy and Nauras

**4AB** Louis and Gabriels

**5HM** Kaytlynne and Filley

**6JS** Sky and Daniel

**F2LC** Harvey and Anayah

**1MB** kevin and George S

**2JW** Amelia and Jaxon

**3AD** Oliver and Ibrahim

**4AR** Kaiya and Sienna

### EYFS

This week we have been continuing with our growing vehicle. We have planted 4 different beans: runner bean, broad bean, jelly bean and baked bean and predicted which we think will grow. We cannot wait to see! We have also looked at and smelled different herbs and have planted our own herbs in our outside garden. We have enjoyed making our own beanstalks in the creative area. Could you have a talk to your children about what their predictions are for our experiment.



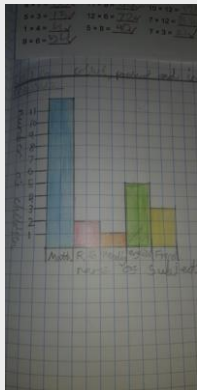
### KS1 (Years 1 and 2)

In year 2 last week we were having fun in the rain exploring for worms, to put in our wormeries. The children had lots of fun, digging, stamping and doing worm dances to charm the worms to the surface.



### KS2 (Years 3 and 4)

Year 4 have been looking at statistics this week. We completed our own enquiry to collect data and then put our data into a bar chart! As you can see, Maths is 4Abs favourite subject!



### KS2 (Years 5 and 6)

**Reusable Bags!**  
In 6EB this week, we have been practising our sewing skills, to add fastening and decoration to a reusable bag. The children have really impressed us with their creativity and sewing skills



### Look out for:

At Sutton Road we are lucky enough to have an onsite Ofsted registered childcare facility. Our Breakfast Club and After School Club provides wrap around care exclusively for the children at Sutton Primary School. The childcare is competitively priced at £3.75 for Breakfast Club - 7.30am onwards and £8.25 for After School Club till 5.30pm. We do offer a shorter session for the first hour at £5.00 till 4.15pm. This makes our daily wrap around care £12! If you are interested in a place for one/both of the clubs please contact Lucy Winfield on [lwinfield@suttonroad.org](mailto:lwinfield@suttonroad.org) or 07816224586. Places are full time NOT 1 off sessions but we accommodate shift patterns and need to be booked and discussed in advance.

### Attendance:

#### Whole School attendance:

Attendance this week is 94.42%

**Winning Classes:** The class with the highest attendance is 5LB with 99%- amazing work, well done.

### Time 2 Chat:

This week we have had lots of exciting things happening in school with Sports days and transition days. Please talk to your child about these two days.

Can they remember what activities they had to do in Sports Day?

Can they tell you how they did the activity and what resources they needed?

Who was their new teacher?

What did they do on transition day?

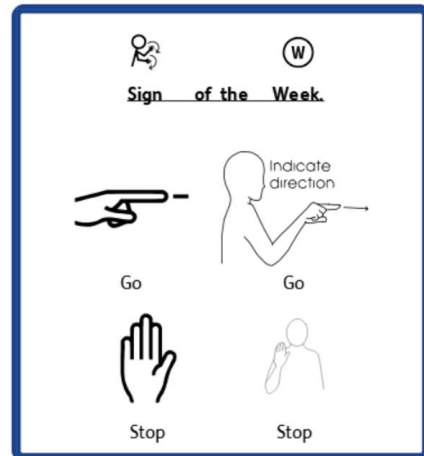
What did they like about their new class?

Who else is in their new class with them?

What are they looking forward to in September?

### Sign of the week:

Here is this week's Sign of the Week.



### Class Emails:

Nursery (Miss Scales)	<a href="mailto:SRF1@suttonroad.org">SRF1@suttonroad.org</a>
F2KE (Mrs Evans)	<a href="mailto:F2KE@suttonroad.org">F2KE@suttonroad.org</a>
F2LC (Miss Carey)	<a href="mailto:F2LC@suttonroad.org">F2LC@suttonroad.org</a>
F2CA (Miss Airton)	<a href="mailto:F2CA@suttonroad.org">F2CA@suttonroad.org</a>
1MB (Mrs Baillie)	<a href="mailto:1MB@suttonroad.org">1MB@suttonroad.org</a>
1AS (Mrs Smith)	<a href="mailto:1AS@suttonroad.org">1AS@suttonroad.org</a>
1LS (Mrs Stewart)	<a href="mailto:1LS@suttonroad.org">1LS@suttonroad.org</a>
2SB (Mrs Bacon)	<a href="mailto:2SB@suttonroad.org">2SB@suttonroad.org</a>
2EB (Miss Baker)	<a href="mailto:2EB@suttonroad.org">2EB@suttonroad.org</a>
2JW (Mr Wakeland)	<a href="mailto:2JW@suttonroad.org">2JW@suttonroad.org</a>
3HB (Mrs Baines)	<a href="mailto:3HB@suttonroad.org">3HB@suttonroad.org</a>
3MS (Miss Smith)	<a href="mailto:3MS@suttonroad.org">3MS@suttonroad.org</a>
3AD (Miss Pickford)	<a href="mailto:3AD@suttonroad.org">3AD@suttonroad.org</a>
4AR (Mr Rathe)	<a href="mailto:4AR@suttonroad.org">4AR@suttonroad.org</a>
4EP (Miss Plume)	<a href="mailto:4EP@suttonroad.org">4EP@suttonroad.org</a>
4AB (Miss Bunting)	<a href="mailto:4AB@suttonroad.org">4AB@suttonroad.org</a>
5LB (Miss Ballard)	<a href="mailto:5LB@suttonroad.org">5LB@suttonroad.org</a>
5HM (Mrs Mitchell)	<a href="mailto:5HM@suttonroad.org">5HM@suttonroad.org</a>
6EB (Mrs Blakeley)	<a href="mailto:6EB@suttonroad.org">6EB@suttonroad.org</a>
6JS (Mrs Skevington)	<a href="mailto:6JS@suttonroad.org">6JS@suttonroad.org</a>

### Upcoming Events:

**Friday 23<sup>rd</sup> July – Last Day of Term**

**Monday 26 July 2021 – Summer holidays begin for children staff INSET days**

**Wednesday 1st September 2021 – First day back at school**

**Sports Day –KS2 on the 15<sup>th</sup> July (Unfortunately parents/carers will not be able to attend)**



SUTTON ROAD PRIMARY  
SCHOOL AND NURSERY