



**SUTTON ROAD PRIMARY
SCHOOL AND NURSERY**

Nicola Davies – Executive Headteacher

Emma Severn – Head of School

t: (01623) 455920

e: office@suttonroad.org

w: www.suttonroad.org

**Sutton Road Primary
School and Nursery**

Moor Lane

Mansfield

Nottinghamshire

NG18 5SF

Newsletter

Monday 14th September 2020

Treetop Thursdays

Thursdays in Nursery Is 'Treetop Thursdays'

During these sessions we go outside onto the field and explore the environment around us through a variety of activities. These sessions happen every Thursday regardless of the weather but for this to happen we need your continued support in making sure your children have the correct clothing in school.



Please ensure your child has: A warm and waterproof coat, A hat, Scarf and gloves

A pair of wellies in a labelled carrier bag - as well as school shoes to enable us to change muddy footwear. Wellies can be left in the Nursery wellie rack if you wish but please ensure they are named.

As always we appreciate your support in order to offer these fantastic experiences to your children.

Hand Sanitizer

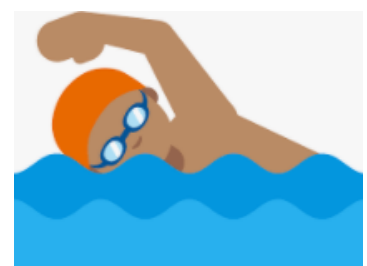
From Monday we will **NOT** be allowing children to use their own hand sanitizer in school. We have to use sanitizer that has been approved for school use, Thank you for your support with this.

Urgent News

We have been contacted by our local PCSO and asked to remind everyone who travels with children in the car to ensure they wear their seatbelts at all times.

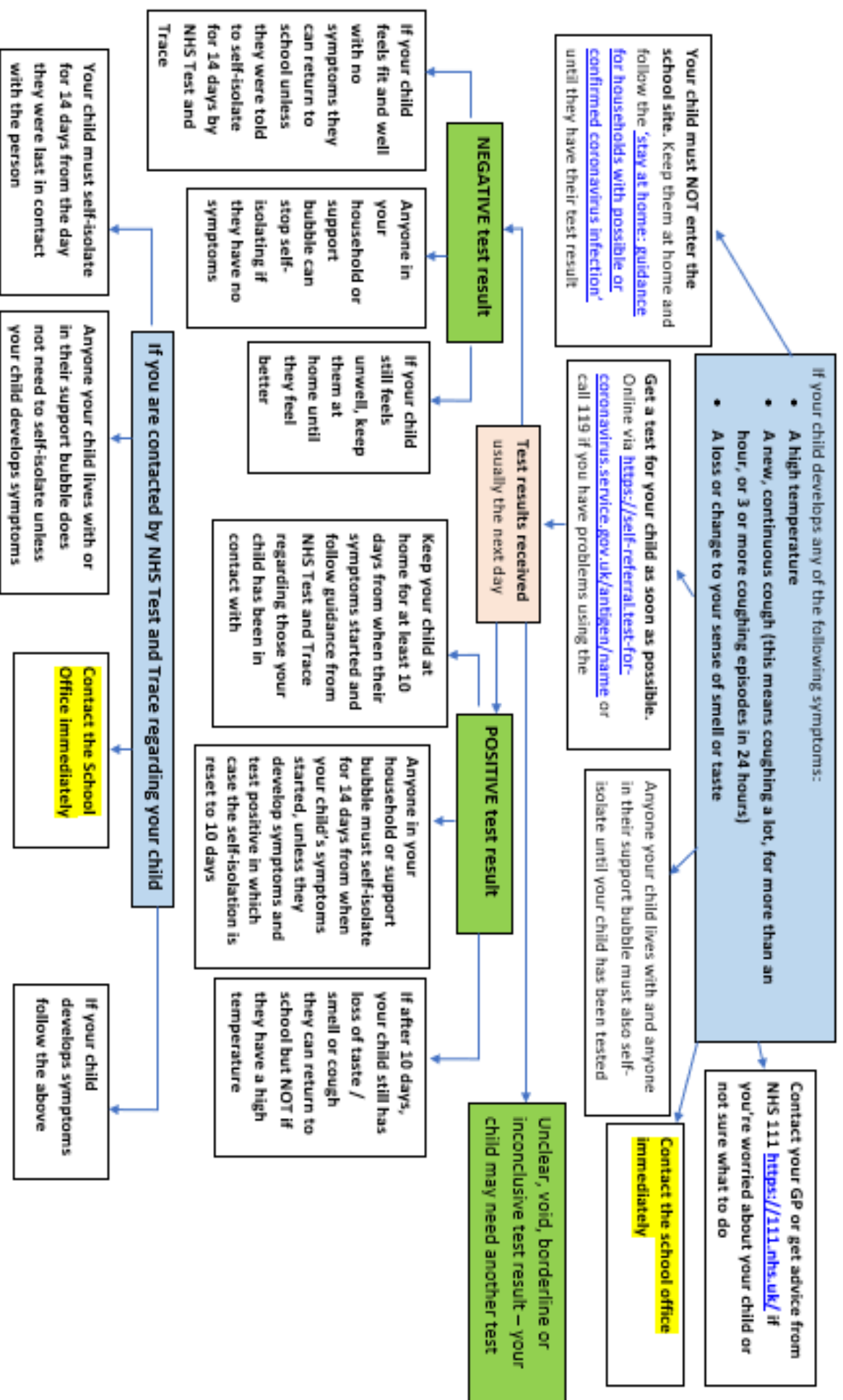
Swimming

5LB are now swimming every Wednesday. Children can wear their PE kit on swimming days instead of their uniform. They must put their swimming kit on underneath their pe kit in the morning and bring a bag with a towel and underwear to dry and change into after swimming.



Guidance if your child develops COVID-19 symptoms or is contacted by Test and Trace

Please note we are unable to advise on individual cases and are only able to guide you according to the NHS procedure below



Please remain in regular contact with the school in all circumstances and keep up to date with any changes in Government guidance

Hello Yellow Day

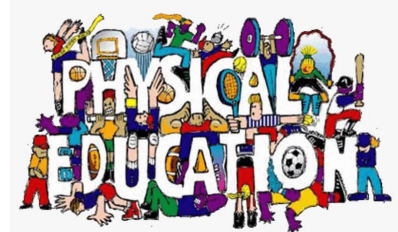
We shall be having 'Hello Yellow Day on Friday 9th October 2020

More details will be provided nearer the time.



PE

As you know PE is a very important part of your child's education and for the new academic year we have developed a new timetable to ensure all children have clear regular PE Sessions indoors and outdoors (weather permitting).



We have endeavoured to ensure that all government guidance is adhered to so that your child can safely partake in physical activity. We have been advised that where possible, children should not get changed on the school site for PE. As a result, your child will need to wear their PE kit to school on the days when they have PE. Your child will go home in their PE kit and they do not need to bring any other clothing into school. Should the weather be wet and cold, your child will still access their PE lessons on their set days and teachers will adapt or use alternative lessons so that your child can complete a PE lesson safely within the classroom environment. We will text you when your child's PE lessons are.

Due to health and safety reasons wearing the appropriate clothing in school is VERY important. Please can you ensure that your child is wearing a white t-shirt and black shorts for indoor PE (if they have indoor PE but the weather is wet and cold when they are walking to school, they can wear jogging bottoms/track suit bottoms) and a white t-shirt and black or dark jumper and jogging bottoms / track suit for outdoor PE. These can be purchased very cheaply from places like Sports Direct, Tesco, Asda or Matalan. Trainers or plimsolls are required.

We also have a no jewellery policy for health and safety reasons and children will be required to remove their own ear rings. All our local secondary schools have strict guidelines on uniform and PE kit and if the boundaries are set in Primary School then the children will see a consistent approach throughout their education.

We have also added new health and safety procedures for all staff and children before, during and after they complete their PE lesson to ensure that everyone is as safe as possible. We are encouraging all children and staff to wash their hands before and after each PE lesson. Additionally all PE equipment used, will be wiped down after each session. We have also adapted every PE lesson for the first term back to ensure social distancing can be adhered to as much as possible in order to lower the spread of germs and we will continue to do this in guidance with government recommendations. We hope that the adaptations we have made will bring some peace of mind to our parents in knowing that we are doing everything possible to keep your children safe in all lessons across the school.

Health and fitness in young children is a priority for young people, their parents and their teachers across the country and is also a high priority for the Government. Please ensure your child always wears their PE kit on their appropriate days, as weekly physical activity and the learning of sports skills is essential for their mind and body.

Nottinghamshire School Holidays 2020-21



September 2020 to July 2021

September 2020

M	T	W	T	F	S	S
	1	2	3	4	5	6
7	8	9	10	11	12	13
14	15	16	17	18	19	20
21	22	23	24	25	26	27
28	29	30				

October 2020

M	T	W	T	F	S	S
			1	2	3	4
5	6	7	8	9	10	11
12	13	14	15	16	17	18
19	20	21	22	23	24	25
26	27	28	29	30	31	

November 2020

M	T	W	T	F	S	S
						1
2	3	4	5	6	7	8
9	10	11	12	13	14	15
16	17	18	19	20	21	22
23	24	25	26	27	28	29
30						

December 2020

M	T	W	T	F	S	S
	1	2	3	4	5	6
7	8	9	10	11	12	13
14	15	16	17	18	19	20
21	22	23	24	25	26	27
28	29	30	31			

January 2021

M	T	W	T	F	S	S
				1	2	3
4	5	6	7	8	9	10
11	12	13	14	15	16	17
18	19	20	21	22	23	24
25	26	27	28	29	30	31

February 2021

M	T	W	T	F	S	S
1	2	3	4	5	6	7
8	9	10	11	12	13	14
15	16	17	18	19	20	21
22	23	24	25	26	27	28

March 2021

M	T	W	T	F	S	S
1	2	3	4	5	6	7
8	9	10	11	12	13	14
15	16	17	18	19	20	21
22	23	24	25	26	27	28
29	30	31				

April 2021

M	T	W	T	F	S	S
			1	2	3	4
5	6	7	8	9	10	11
12	13	14	15	16	17	18
19	20	21	22	23	24	25
26	27	28	29	30		

May 2021

M	T	W	T	F	S	S
					1	2
3	4	5	6	7	8	9
10	11	12	13	14	15	16
17	18	19	20	21	22	23
24	25	26	27	28	29	30
31						

June 2021

M	T	W	T	F	S	S
	1	2	3	4	5	6
7	8	9	10	11	12	13
14	15	16	17	18	19	20
21	22	23	24	25	26	27
28	29	30				

July 2021

M	T	W	T	F	S	S
			1	2	3	4
5	6	7	8	9	10	11
12	13	14	15	16	17	18
19	20	21	22	23	24	25
26	27	28	29	30	31	

August 2021

M	T	W	T	F	S	S
						1
2	3	4	5	6	7	8
9	10	11	12	13	14	15
16	17	18	19	20	21	22
23	24	25	26	27	28	29
30	31					



School Holidays



Public Holidays



Administration Day