

Outstanding Attendance Trip

The children all had a great time at Belton House and even managed to keep out of the sun with all the shade from the trees.



Thank you to everyone who raised money for our penalty shoot out.

Last week we had our celebration assemblies for our fundraiser with **Mansfield Town Football Club**, thank you for everyone who raised money for our school, we will be looking to spend this on new playground equipment for the children.

A big shout out to our biggest fundraiser Blake who won the signed MTFC shirt.



When picking out trunks and cozzies for the kids, what's on your mind? We're going to guess: something that's affordable, durable and probably has their fave character stamped all over it - right? We were the same, until we learned just how important swimwear colours can be - and we've got gold medallist, **Rebecca Adlington**, on the case to support us.



- What can and can't be seen:
- Blue
 - White
 - Grey
 - Pink
 - Yellow
 - Red
 - Black
 - Purple
 - Green
 - Fluorescent colours

"I've swam my entire life and I've only recently become aware that there are certain colours that can't be seen underwater. As a parent, I should have been aware of this sooner. **Alongside On the Beach, I'm urging the government to review the legislation around selling blue, white and grey swimwear to children.** They must make sure retailers are being safe and looking after our children by not selling unseeable swimwear that could put them in danger."



To sign the petition and help keep children safe when swimming scan the QR code or visit: www.onthebeach.co.uk/swimwear-safety

UK Charity, the Royal Life Saving Society UK (RLSS UK) is in full support of On the Beach's focus on water safety this summer. Visit Parents Resources, Royal Life Saving Society UK (RLSS UK) for more information on how to keep you and your family safe on holiday and donate here - ROYAL.LIFE.SAVING.SOCIETY.UK/givestp.co.uk



www.onthebeach.co.uk

[f](https://www.facebook.com/onthebeachholidays) [i](https://www.instagram.com/onthebeachholidays) [t](https://www.tiktok.com/@onthebeachholidays) [y](https://www.youtube.com/@onthebeachholidays) @onthebeachholidays





We have been looking at 2D shapes in Nursery. The children had to use the shapes to create pictures in their maths lessons. We had some great pictures, ranging from rockets and houses to foxes and themselves!

Year 1 have been busy making fresh fruit salads this week. They investigated fruit salads and tried a tinned and fresh version and evaluated their taste, smell, taste and texture. They learnt how we should eat at least 5 fruits each day and make sure that the fruits are the different colours of the rainbow. They listened to Handa's Surprise, a story set in Kenya and learnt the skills of cutting safely using the bridge and claw method. Once the fruit was cut they tried the different fruits and completed a tally chart to find the most popular fruit in the class.

They used the information they had collected and criteria set by Mrs Severn to design their own fresh fruit salad. They worked together to make a fresh fruit salad and then they tasted it. Most children really enjoyed it even though they may have been reluctant at first. There were lots of clean bowls and please could I have some more?



Linked with our Vehicle on 'Around Europe in 80 Days', Year 3 have been practising our sewing skills. We tried the running stitch, back stitch, and blanket stitch. Then, we used our skills to design, create and evaluate a 'bendy bag' which we could use to hold important objects like tickets, money, or passports while travelling around Paris.

Year 5 had the most amazing time at the National Space Centre 🚀👽🌍 the workshops were amazing and we had the best time exploring. A big thank you to the adults who came to help! 🙌



Attendance

W/B 15.7.24

Whole School Attendance 94.18%

Year Group with highest attendance	Classes with over 98% attendance	Classes with no unauthorised absences
Nursery (96.67%)	AM Nursery (98.75%)	AM Nursery
	F2JG (98.1%)	3CM
	1AB (98.8%)	5CB
	3CM (98.4%)	
	6LN (98.67%)	

Classes with the best attendance:
Foundation Stage: AM Nursery with 98.75%
Key Stage 1: 1AB with 98.8%
Lower Key Stage 2: 3CM with 98.4%
Upper Key Stage 2: 6LN with 98.67%

Our PRIDE of Sutton Road

(Personal Responsibility in Delivering Excellence)

Well done to our **ALWAYS children who take pride in everything they do** and our **MENTIONS children** who were chosen this week

1AS MENTION Elise ALWAYS Lilly	1NG MENTION Feliks ALWAYS Alyssa	1AB MENTION Rosie ALWAYS Adelyn Rose
2MD MENTION Logan ALWAYS Summer	2KT MENTION Eva ALWAYS Harper	2LS MENTION Lily ALWAYS Junior
3JW MENTION Leo ALWAYS Senalya	3CM MENTION Chloe ALWAYS Aurora	3MH MENTION Kai ALWAYS Piotr
4AO MENTION Harriet ALWAYS Loreta	4DB MENTION Mia ALWAYS Shay	4KC MENTION Michelle ALWAYS Eric
5LB MENTION Ffion ALWAYS Gerrard	5CC MENTION Demantis ALWAYS Shay	5CD MENTION Aiden ALWAYS Demian
Bubble 1 MENTION Victor and Ernest ALWAYS Owen and Ollie	Bubble 2 MENTION Dylan P ALWAYS Johnny and Jacob	Bubble 3 MENTION Maisie ALWAYS Oliver
Bubble 4 Mention Ridley ALWAYS Eliza bete		

Nits

We have a few little visitors in school.
Can we please ask that you check your child's hair on a regular basis.

The wet combing method is recommended however most chemists and pharmacists sell effective treatments.

Its is recommended that treatments are repeated.

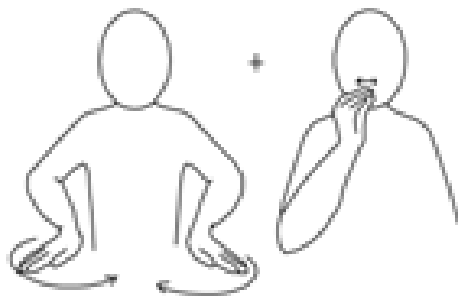


Key Information

Our 'draw a shop' competition winners in F2 had a great time delivering our flowers to Baily House Care Home this week! They each picked a resident to hand their flowers to, played games and even got a cup of juice. 🌸



Key Information



Park

https://www.youtube.com/watch?v=xV_1l1mQx94

Sign of the Week

INSET - Thursday 25th July 2024
INSET - Friday 26th July 2024

Summer Term

15 April - 24 May **5 weeks 4 days**

3 June - 26 July **8 weeks**

Library Visits

Monday 22nd July - 4DB

Diary Dates

Contact us...

Staff are available to talk to briefly, before or after school (but please remember they may need to arrange an alternative time if you need a longer chat).

For non-urgent matters each class teacher also has a class email address that parents can use, these are checked every school day by the teacher.

If you are not sure of your class email, take a look at the school website or follow the QR code opposite 😊

