

Parking Issues

Sadly, we have again witnessed dangerous parking, from some parents, at drop off and pick up times around our school. We had a near-miss incident with a child which the police are now involved in.

Please:

- DO NOT park or pull up on the zig zag marking outside school or near the cones, as this area is designated for our families and children to cross safely.
- Ensure you follow the Highway code when it comes to parking outside our school, which states that drivers MUST NOT park their car...
 - Near to the entrance of a school.
 - Anywhere that would prevent access for the Emergency Services.
 - In front of or on an entrance to someone else's property.
 - On a road bend.
 - Opposite a road junction or within ten (10) meters (32 feet)
 - near junctions or corners (except in authorised spaces).
 - Anywhere the kerb is lowered. This is usually done to assist
 - powered mobility vehicles and wheelchair users.



Please help us to keep our children and families safe.

Year 1 have been busy looking for signs of spring. They went on a walk around school and noticed how buds are beginning to appear on trees and that daffodils and daisies have started to grow. They also spotted insects such as ladybirds and could hear different birds. As part of their learning about spring, they have also been looking closely at the weather. They have been recording the weather, temperature and amount of rainfall each day. So far, they have learnt that the weather is getting warmer and they have noticed that the days are becoming longer.



Reading Update

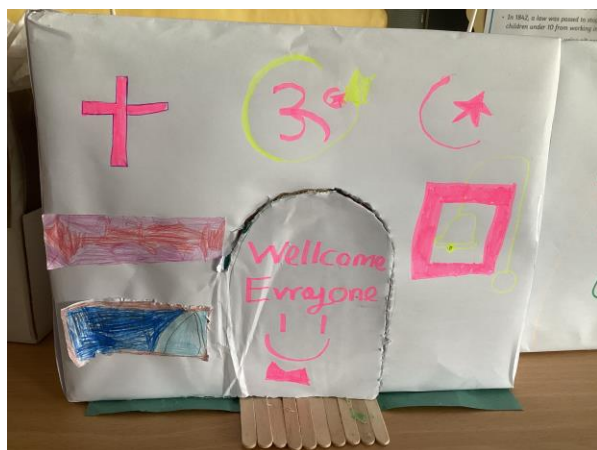
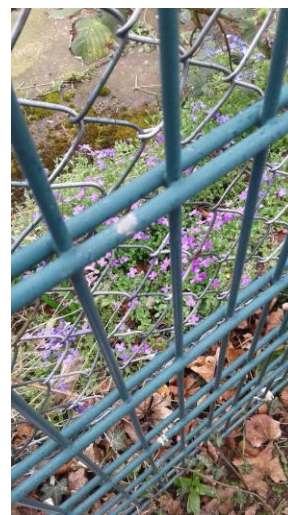
Reading Champions had the difficult task of choosing winners for our paper plate competition recently. As there were so many fantastic entries, Reading Champions chose 3 winners (1st, 2nd and 3rd) from each year group. All winners received a certificate and the winners in each group chose a book as their prize. Here are a few of the winning entries. Reading Champions would like to say well done to everyone who entered. 😊





This week, linking to our topic on the farm, our book has been 'The Little Red Hen'. In the story, the hen makes bread, but her friends don't help her. Mrs Barton made the bread, but unlike the story, we all worked together as a team to help her. We then, once it was ready, enjoyed a lovely, warm bread roll!

As part of our science seasons work Year 1 have been looking around the school grounds for signs of spring. They saw the buds on the trees, flowers in the garden like daffodils and daisies and some birds were collecting twigs for their nests. They learnt that they days are getting longer and the weather is getting warmer. We looked at other signs of spring such as lambs and chicks being born, blossom and catkins on trees and lots of flowers grown from bulbs like tulips, crocus, snowdrops and daffodils starting to appear in gardens. They are keeping a weather chart and are recording the weather, rainfall, and temperature so they can compare it to the information they collected about winter.



Over the Spring term, Year 3 have been learning all about different religious buildings. As a project for the last couple of weeks, we have asked the children to design and make a new meeting place for Mansfield. We have discussed how we could make them welcoming for all religions by including different features and symbols.

Year 5 have had their final lesson learning about forces. We made pulleys to see how they work.



Attendance

W/B 18.3.24

Whole School Attendance 94.49%

Year Group with highest attendance	Classes with over 98% attendance	Classes with no unauthorised absences
Year 6 (96.78%)	2LS (98.67%)	AM Nursery 1AS 3JW 5CD 6HM 6JS 6LN

Classes with the best attendance:
Foundation Stage: AM Nursery with 96.92%
Key Stage 1: 2LS with 98.67%
Lower Key Stage 2: 4DB both with 97.69%
Upper Key Stage 2: 6JS with 97.33%

Our PRIDE of Sutton Road

(Personal Responsibility in Delivering Excellence)

Well done to our **ALWAYS** children who take pride in everything they do and our **MENTIONS** children who were chosen this week

F2JG	F2EK	F2RR
No mentions	No mentions	No mentions
1AS	1NG	1AB
MENTION Lucian ALWAYS Skylar	MENTION Funmise ALWAYS Oscar	MENTION Rosie ALWAYS Adam
2MD	2KT	2LS
MENTION Toby ALWAYS Nuraz	MENTION Max ALWAYS Harper	MENTION Theo ALWAYS Aleksa
3JW	3CM	3MH
MENTION Niki ALWAYS Nikola	MENTION Sravan ALWAYS Ayat	MENTION Eleanor ALWAYS Sofia
4AO	4DB	4KC
MENTION Ava ALWAYS Tayla	MENTION Cody ALWAYS Thomas	MENTION Aneya ALWAYS Petros
5LB	5CC	5CD
MENTION ALWAYS	MENTION Oscar ALWAYS Luka	MENTION Martin ALWAYS Aaron
6LN	6HM	6JS
MENTION ALWAYS	MENTION Aiyana ALWAYS Robert	MENTION Wiktor ALWAYS Ibrahim

Is my child too ill for school?

Here is a handy link if you are unsure if your child is well enough for school.

<https://www.nhs.uk/live-well/is-my-child-too-ill-for-school/>

This provides NHS guidance on most of the common ailments children are likely to come down with.

If you are still unsure, please phone school for further advice.

Key Information

MMR Vaccination

Please see attached information regarding the MMR vaccination: Clinics are available during the Easter break that the schools immunisations service are running. Here's the details for them too: Appointments can be made by calling the office on 03333 583397 option 4 or by emailing immunisations.nottinghamshire@intrahealth.co.uk

Highfields Fire Station (The Dunkirk Room), Hassocks Ln, Beeston, Nottingham NG9 2GQ on 4 April from 10am-4pm

Boots Victoria Centre 11-19 Lower Parliament St, Nottingham NG1 3QS on 8 April from 10am-4pm

Arnbrook Childrens Centre NG5 8NE – Creche Room on 11 April from 10am-4pm

Summer House Children's Centre, Clare Road, Off Leamington Drive, Sutton in Ashfield, NG17 5BB on 2 April from 10am-4pm

Retford Children's Centre, Spa Lane, Retford DN22 6EA on 3 April from 10am-4pm

Hawtonville Childrens Centre, Bowbridge Road, Newark, NG24 4EG on 5 April from 2pm-4pm

East Leake Parish Council Building, 45 Main St, East Leake, Loughborough LE12 6PF on 5 April from 10am-1pm

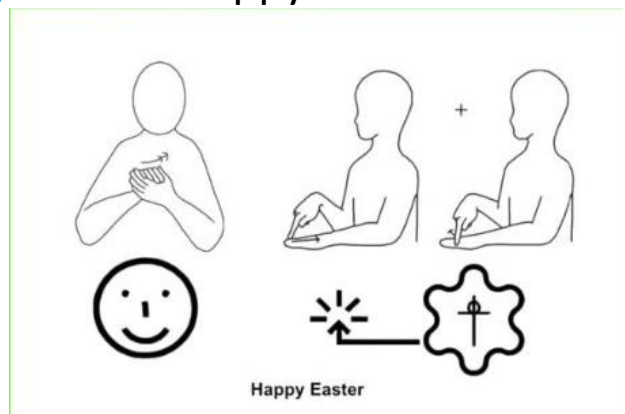
Ollerton Children's Centre, The Dukeries Academy, Whinney Ln, New Ollerton, Newark NG22 9TD on 9 April from 10am-4pm

Retford Childrens Centre Spa Lane, Retford DN22 6EA on 10 April from 10am-4pm

Mansfield Woodhouse Childrens Centre, Swan Ln, Mansfield Woodhouse, Mansfield NG19 8BT on 12 April from 10am-4pm

Key Information

Happy Easter



<https://www.youtube.com/watch?v=HuINILoECQM>

Sign of the Week

Spring Term

4 January - 9 February **5 weeks 2 days**

19 February - 29 March **5 weeks 4 days**

Summer Term

15 April - 24 May **5 weeks 4 days**

3 June - 26 July **8 weeks**

INSET - Thursday 28th March

INSET - Thursday 25th July 2024

INSET - Friday 26th July 2024

Diary Dates

Contact us...

Staff are available to talk to briefly, before or after school (but please remember they may need to arrange an alternative time if you need a longer chat).

For non-urgent matters each class teacher also has a class email address that parents can use, these are checked every school day by the teacher.

If you are not sure of your class email, take a look at the school website or follow the QR code opposite 😊

