

Newsletter

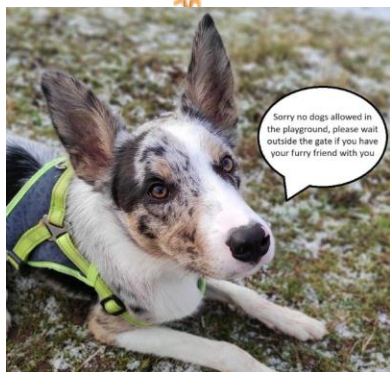
Spring 2 Week 4

Week beginning – 11.3.2024

Save
the
Date



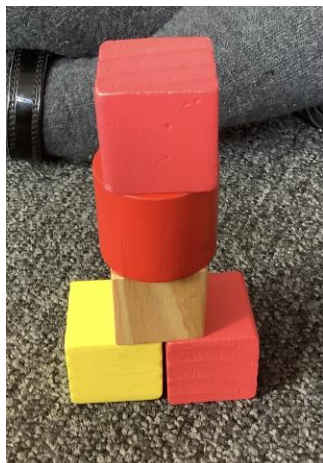
Polite reminder: No dogs are allowed in the playground. Please wait outside the gate if you have your furry friend with you.



Reading Update

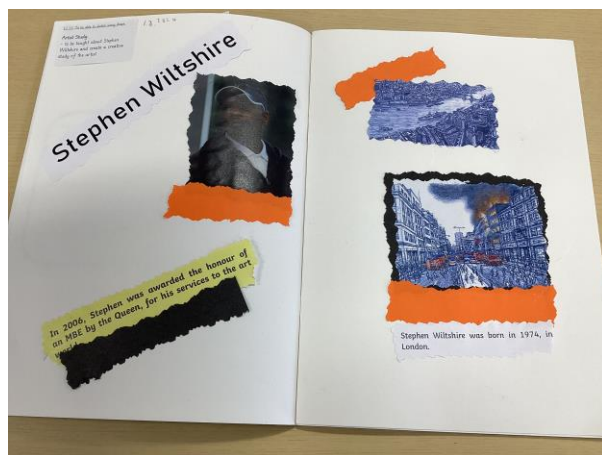
Reading Forum have been blown-away by all the paper plate creations of book characters we have received. There were hundreds of entries and they were all so imaginative and creative. Reading Forum had the very difficult decision of choosing winners from each year group. All entries were amazing – thank you for your support.





It has been all about shapes in F2! In math's we have been revisiting our 2d shape knowledge and learning new shapes which are 3D. We have been learning about the different properties of a cone, cylinder, cube and sphere. The children have been constructing different buildings using their newly learnt shape knowledge.

As part of their Great Fire of London vehicle the children in year 2 have been learning about an artist called Stephen Wiltshire who is a British artist who is most famous for drawing and painting detailed cityscapes. We loved doing the artist study on him and really like his motto 'do the best you can and never stop.' Next week we can't wait to work with our art teacher and create our own cityscapes applying our skills.



Following our research about existing Mexican dips, Year 4 had a go at making their own Salsa.

We looked at a variety of recipes to decide what we wanted to include and we made 2 versions: 1 smooth and 1 chunky! However, 4AO may have used a bit too much coriander... our Salsa turned green!

Year 6 have started to up-cycle their t-shirt designs. We have practised running stitch and back stitch. We will be using old material and buttons to create our new designs.



Attendance

W/B 11.3.24

Whole School Attendance 96.12%

Year Group with highest attendance	Classes with over 98% attendance	Classes with no unauthorised absences
Year 4 (98.23%)	AM Nursery (98.46%) F2JG (98.1%) 1AB (98.4%) 1AS (100%) 3CM (99.23%) 4AO (99.23%) 4KC (98.15%) 6JS (99.67%) 6HM (98%)	AM Nursery 30 Hours Nursey F2RR 1AS 2LS 2MD 3CM 3MH 4AO 4DB 4KC 5CC 6JS 6HM

Classes with the best attendance:

Foundation Stage: AM Nursery with 98.46%

Key Stage 1: 1AS with 100%

Lower Key Stage 2: 3CM and 4AO both with 99.23%

Upper Key Stage 2: 6JS with 99.67%

Our PRIDE of Sutton Road

(Personal Responsibility in Delivering Excellence)

Well done to our **ALWAYS** children who take pride in everything they do and our **MENTIONS** children who were chosen this week

F2JG	F2EK	F2RR
No mentions	No mentions	No mentions
1AS	1NG	1AB
MENTION Elise ALWAYS Anaïs	MENTION Maya ALWAYS Alyssa	MENTION Darius ALWAYS Ivy
2MD	2KT	2LS
MENTION Rosie ALWAYS Jensen	MENTION Sam ALWAYS Lyla-Rae	MENTION Mirra ALWAYS Grace
3JW	3CM	3MH
MENTION Areeb ALWAYS Jasmine	MENTION Mason ALWAYS Cristal	MENTION Amy ALWAYS Anaya
4AO	4DB	4KC
MENTION Eleanor ALWAYS Connor	MENTION Sofia ALWAYS Shay	MENTION Kevin ALWAYS Michele
5LB	5CC	5CD
MENTION Dylan ALWAYS Gabriels	MENTION Max ALWAYS Louie	MENTION Ruby-May ALWAYS Faith
6LN	6HM	6JS
MENTION Ryan ALWAYS Roxie	MENTION Corey ALWAYS Olivia	MENTION Eva ALWAYS Kaitlin

Please Help...



At Sutton Road Primary, we are keen to celebrate the history of the local area of Mansfield and help the children to make connections with their learning based on the local area and have a sense of belonging to where they live.

We are excited to share that we are aiming to create a large, permanent display in our main school hall which celebrates Mansfield's rich heritage.



We are looking for people who can share their knowledge, photographs, newspaper clippings or information relating to the history of the local area. This could be from you or family and friends, who may have worked in some of Mansfield's big firms, such as Metal Box, Mansfield Brewery, or who may know more about the history of Sutton Road/Moor Lane Infants/First School. We of course, are happy to make copies so that you still have your mementos to keep for yourself.



We are anticipating a lot of interest and support for this project and are hoping to share our display with you around our findings later in the Summer.

Please can any donations be sent to the school office in a labelled envelope with a child's name and class on so that they can be returned to the correct person. Or email things into the main school office email - office@suttonroad.org

Thank you in anticipation for all your support.

Sutton Road Primary School

Watch out Nits are about

Can we please ask that you regularly check your child's hair for little visitors.

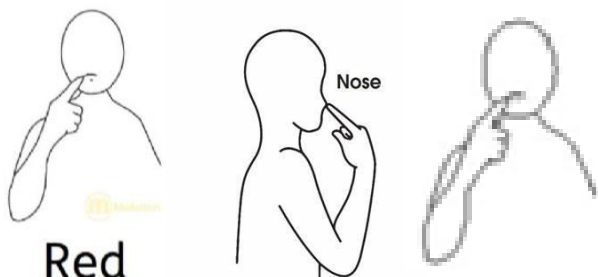
The wet combing method is recommended however you can buy numerous treatments from supermarkets and chemists which are also effective.

Thank you



Key Information

Red Nose Day



<https://www.youtube.com/watch?v=HW1m2FZZRG>

Sign of the Week

Contact us...

Staff are available to talk to briefly, before or after school (but please remember they may need to arrange an alternative time if you need a longer chat).

For non-urgent matters each class teacher also has a class email address that parents can use, these are checked every school day by the teacher.

If you are not sure of your class email, take a look at the school website or follow the QR code opposite ☺



Sutton Road's Parent and Carer SEND Coffee Sessions



Thursday 25th April at 2pm in the Small Hall

For our next session, we have Alison Hardwick from Sherwood Area Partnership joining us to deliver a session around the Breakwell Cycle. This is a model that shows the phases children go through when they are struggling to regulate. This is crucial when we are trying to understand and support children, especially when they are dysregulated.

Please book your places for the session via Parentmail.

If you have any questions, please contact us at

SRSEN@suttonroad.org

Spring Term

4 January - 9 February **5 weeks 2 days**

19 February - 29 March **5 weeks 4 days**

Summer Term

15 April - 24 May **5 weeks 4 days**

3 June - 26 July **8 weeks**

INSET - Thursday 28th March

INSET - Thursday 25th July 2024

INSET - Friday 26th July 2024

Diary Dates

