

Zones of Regulation

Our children have been learning about the zones of regulation and we will be holding a celebration event on

On **Friday 26th January** children are invited to come into school wearing one of the 4 colours listed below.

The **Blue Zone** represents feeling sad, tired or low-energy.

The **Green Zone** signifies a calm and focused state, where children are ready to learn.

The **Yellow Zone** is for when children are experiencing heightened emotions like frustration, anxiety, or excitement.

The **Red Zone** indicates intense emotions such as anger, panic, or extreme excitement.

We want to develop the children's understanding that all children experience different emotions at different times and that we can all work to support each other.

In addition to this, as asked for in our recent parental questionnaire, we would like to hold a Coffee Morning on Friday 26th January, (9am-2pm) where we will provide an overview of our behaviour policy and share information around the Zones of Regulation. If you would like to attend, please book a place via Parentmail.

By working together at home and at school, we can help your child develop essential emotional regulation skills that will benefit them throughout their lives. If you have any questions or need further guidance, please don't hesitate to reach out to us.

Reading Update

Do you have any free time to be able to volunteer in our school? Could you hear some of our young children read? We would love to hear from you. If you would like to volunteer some of your time to come into school and hear children read, then please contact the school office. Thank you.



Sutton Road's Parent and Carer SEND Coffee Sessions Spring term



Friday 26th January at 9am and 2pm in the small hall
In this session, our Inclusion Team will share the principles of The Zones of Regulation, as a way to support children to manage their emotions.

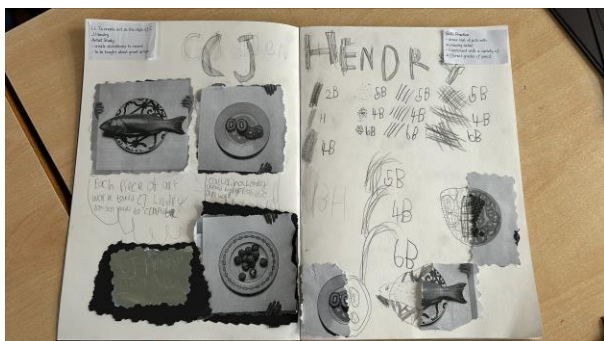
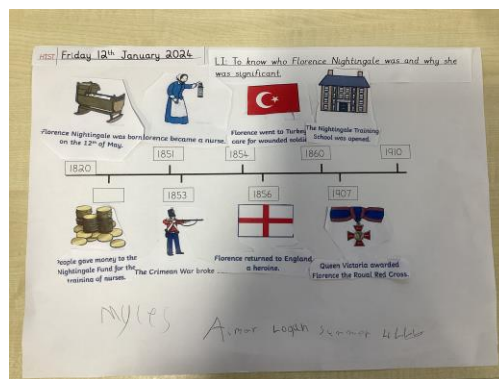
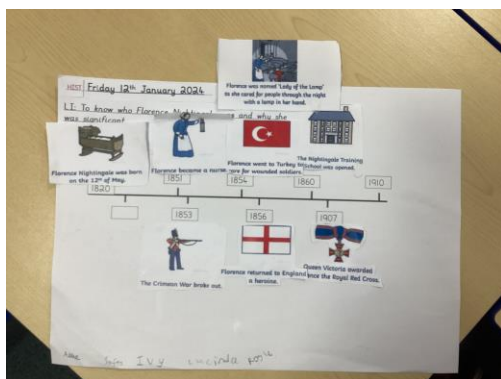
Thursday 22nd February at 2pm in the small hall
For this session, we have an Educational Psychologist joining us to deliver a session around Emotion's Coaching. This is a crucial part of our approach to managing behaviour in school and can be used at home. This is something that we know many parent's would like further information on, so please come and join us!
Please book your places for all sessions via Parentmail.

If you have any questions, please contact us at
SRSEN@suttonroad.org



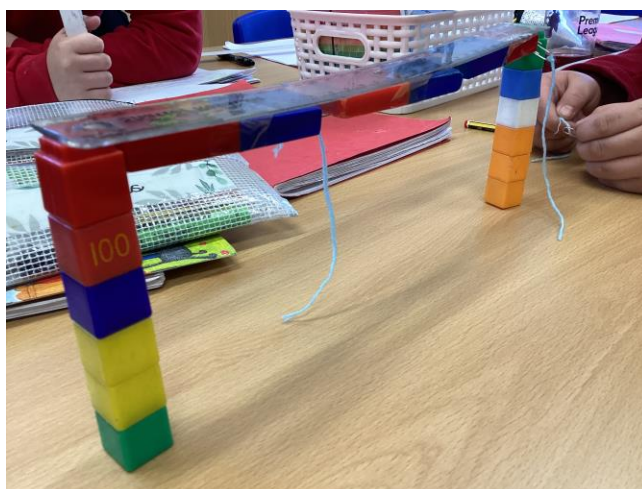
In Nursery, we had a visit from the Road Safety Team. They told us about how important it is to 'stop, look and listen' before we cross the road and taught us a special song too to help us remember. We knew we had to look for cars and other vehicles on the road and that we had to hold a hand of a grown-up, to keep us safe.

In Year 2 we are looking at Gruesome Germs! As part of our work in History we are looking at Florence Nightingale. We worked in groups and made a timeline of her life.



This term, Year 3 have started a new Vehicle 'Can I take your order?' We are learning all about healthy diets, including the benefits of vegan and vegetarian diets! We have explored the art of an Australian hyper-realistic artist called CJ Hendry and practiced some sketching skills to help us when we sketch a plate of food.

Year 5 have enjoyed Science as we have started a new unit about Forces. We looked at gravity and completed an experiment to learn about how it all works.



Attendance

W/B 8.1.24

Year Group with highest attendance	Classes with over 98% attendance	Classes with no unauthorised absences
Year 3 (96.88%)	1AS (99.2%) 3CM (99.23%) 3JW (98.85%) 4KC (98.52%)	30 hours nursery F2RR 1AS 2KT 3CM 3JW 6HM 6LN

Reminder Absence reporting

When reporting your child absent from school please can we ask that you use 1 of the three methods of communication below.

- Report an absence via Parentmail
 - Email the school office on office@suttonroad.org
- Telephone the school office on 01623 455920

Absence Reminder

Can we remind all parents/carers to call school to inform us of absence due to illness. In some cases this will have to happen every day should the illness be longer than 1 day.

EVERY DAY COUNTS!

Our PRIDE of Sutton Road

(Personal Responsibility in Delivering Excellence)

Well done to our **ALWAYS** children who take pride in everything they do and our **MENTIONS** children who were chosen this week

F2JG	F2EK	F2RR
No mentions	No mentions	No mentions
1AS	1NG	1AB
MENTION Mia ALWAYS Leo	MENTION Mea ALWAYS Darina	MENTION Sinita ALWAYS Ben
2MD	2KT	2LS
MENTION Toby ALWAYS Paizly	MENTION Joey ALWAYS Hemmi	MENTION Mirra ALWAYS Junior
3JW	3CM	3MH
MENTION Eleen ALWAYS Niki	MENTION Fletcher ALWAYS Mason	MENTION Hurdi ALWAYS Amy
4AO	4DB	4KC
MENTION Kyle ALWAYS Henry	MENTION Oluwafunmito ALWAYS Skye	MENTION Rowan ALWAYS Francesca
5LB	5CC	5CD
MENTION Oliver ALWAYS Lyndsey	MENTION Demantis ALWAYS Tommy	MENTION Aaron ALWAYS Oscar
6LN	6HM	6JS
MENTION Jessica ALWAYS Tomiwa	MENTION Noah ALWAYS Oliwia	MENTION Valerija ALWAYS Connor

Start times

Can we kindly remind everyone that our official start time is **8.40am (8.30am for nursery)** however we open our doors at 8.30am.

Every child that arrives after 8.40am **MUST** go through our late gate in order for us to take details.

Key Information

Watch out Nits are about

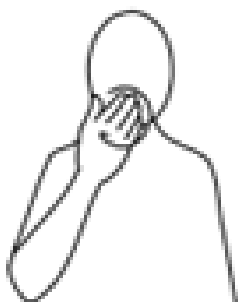
Can we please ask that you regularly check your child's hair for little visitors.

The wet combing method is recommended however you can buy numerous treatments from supermarkets and chemists which are also effective.

Thank you

Key Information

School



https://www.youtube.com/watch?v=VMPeAxDD1_0

Sign of the Week

Spring Term

4 January - 9 February **5 weeks 2 days**

19 February - 29 March **5 weeks 4 days**

Summer Term

15 April - 24 May **5 weeks 4 days**

3 June - 26 July **8 weeks**

INSET - Thursday 28th March

INSET - Thursday 25th July 2024

INSET - Friday 26th July 2024

Diary Dates

Contact us...

Staff are available to talk to briefly, before or after school (but please remember they may need to arrange an alternative time if you need a longer chat).

For non-urgent matters each class teacher also has a class email address that parents can use, these are checked every school day by the teacher.

If you are not sure of your class email, take a look at the school website or follow the QR code opposite 😊

