

Individual Pupil Photos

Tuesday 30th January

This year we will be doing our individual pupil photographs on Tuesday 30th January.

To facilitate the smooth running of this we are offering all families the opportunity to have a sibling in our school photographs by request only. Our photographers will be available from 7.45am – 8.20 am on that morning.

If you would like your children that are currently at Sutton Road Primary to have a sibling photograph please register your interest on the form that will be sent via Parent in the forms section.

The slots will be 5 mins each. Once you have registered your interest, we will issue you a slot time for your photograph. It is essential to the smooth operation that you come at your allotted time as the slots will be very limited. If you would like your children to have a sibling photograph but are unable to do this between 7.45am – 8.20am please could you request this on the form provided and we will endeavour to pick this up after all the individual photographs have been taken.

What can you do to help keep everyone safe around our school?

Please DO NOT:

- Block the road - emergency vehicles and other traffic may need access
- Park on yellow lines, zig-zags or block the school entrance
- Park on the pavement, across dropped kerbs or residents' driveways
 - Park opposite or within 10 metres of a junction
- Park where you will cause inconvenience to other road users
- Leave your vehicle with the engine still running
- Stop in the middle of the road to drop your child off, even for a few seconds.



Maths Update

We are delighted to be supporting the NSPCC by taking part in Number Day on Friday 2nd February 2024 and will be planning activities through the week.

On Friday 2nd February 2024 we will be using fun curriculum-based maths challenges designed by teachers at Sutton Road Primary. To help raise money for the NSPCC, we are asking pupils to collect sponsorship / donations using the enclosed sponsor form (see reverse). Children could raise money by one of the following: moving up in their superhero times table tests, winning a TTRS battle, answering set addition/subtraction questions (Year 1) or answering more multiplication questions correctly (year 4).

We are opening up our classrooms so that you can join us to solve maths problems, but due to the size of the school we are doing this over several mornings. This will also give you the opportunity to have a look at what methods your children are using in their Maths lessons and for their homework.

- Wednesday 31st January – EYFS and KS1 (8.30-9am)
- Thursday 1st February – Year 3 and 4 (8.30-9am)
- Friday 2nd February – Year 5 and 6 (8.30-9am)

Don't worry if you are unable to make the morning, we will be putting extra challenges on Facebook for families to try at home.

Reading Update

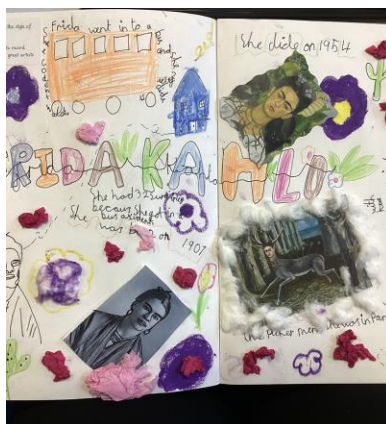
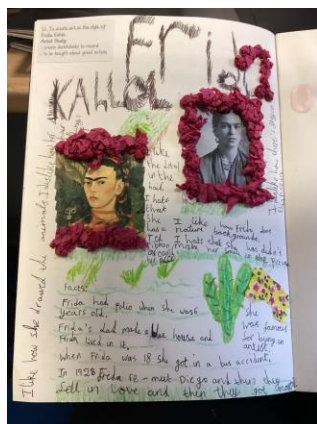
A reminder that our school's library is open again on Tuesday and Wednesday morning from 8.00 – 8.30. We have a range of picture books, fiction and non-fiction for you to browse through.





With winter well and truly upon us now, the children have been thinking about the effects of winter in forest school. The children took turns to lie down on a tarpaulin on the grass and looked up at the trees to see what they could see. We talked about the branches, twigs and pinecones that were still on the trees and then the children went off to do their own drawings. Well done for some super winter pictures.

Year 1 have been learning about the different materials objects are made from. They have learnt the vocabulary related to materials eg fabric, wood, metal, plastic, glass, rock, rubber and have named the material familiar objects are made from. They then sorted a range of objects grouping them using the material they were made from.



Year 4 have been learning all about Frida Kahlo in reading and art. This week, we completed an artist study to share facts and opinions about her life and her artwork.

Year 6 have started a new vehicle for the spring term. We will be learning all about recycling, reusing and reducing. We will be exploring all aspects of recycling including how plastic can be recycled and the impact of pollution on climate change.



Attendance

W/B 8.1.2024

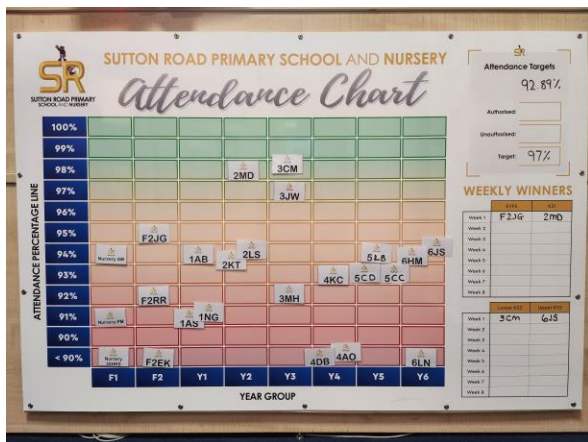
Year Group with highest attendance	Classes with over 98% attendance	Classes with no unauthorised absences
Year 3 (96.2%)	2MD (98.52%) 3CM (98.63%)	3CM 4KC

Attendance

Please see below a photo of our new school attendance board which is located near reception.

3CM have set the bar but lots of classes have really got to get in the race!

Our attendance target is now 97% but we are only currently at 92.89%.



Our PRIDE of Sutton Road

(Personal Responsibility in Delivering Excellence)

Well done to our **ALWAYS** children who take pride in everything they do and our **MENTIONS** children who were chosen this week

F2JG	F2EK	F2RR
No mentions	No mentions	No mentions
1AS	1NG	1AB
MENTION Diya ALWAYS Dominik	MENTION Arthur ALWAYS Alyssa	MENTION Ivy-Jean ALWAYS Amy
2MD	2KT	2LS
MENTION Daniel ALWAYS Ronnie	MENTION Blake ALWAYS Mia	MENTION Grace ALWAYS Reeve
3JW	3CM	3MH
MENTION Skye ALWAYS Leah	MENTION Frankie ALWAYS Keegan	MENTION Eleanor ALWAYS Fern
4AO	4DB	4KC
MENTION Viktorija ALWAYS Freya	MENTION Thomas ALWAYS Mia	MENTION Phoebe ALWAYS Jens
5LB	5CC	5CD
MENTION Ben ALWAYS Taylor	MENTION Alex ALWAYS Chloe	MENTION Neiva ALWAYS Alexander
6LN	6HM	6JS
MENTION Jack ALWAYS Evie	MENTION Joel ALWAYS Sara	MENTION Dylan ALWAYS Katrina

INSET DAYS

Below are the remaining INSET days we have booked for the academic year.

Thursday 28th March 2024 (the next day school will be closed for Good Friday as part of the Easter Break)

Thursday 25th July 2024

Friday 26th July 2024

Key Information

Individual School Photos

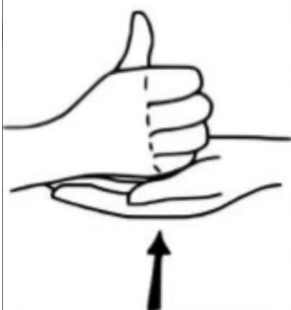
A date for your Diary.

Tuesday 30th January 2024



Key Information

help



<https://www.youtube.com/watch?v=yAvkHt9mlT4>

Sign of the Week

Spring Term

4 January - 9 February **5 weeks 2 days**

19 February - 29 March **5 weeks 4 days**

Summer Term

15 April - 24 May **5 weeks 4 days**

3 June - 26 July **8 weeks**

INSET - Thursday 28th March

INSET - Thursday 25th July 2024

INSET - Friday 26th July 2024

Diary Dates

Contact us...

Staff are available to talk to briefly, before or after school (but please remember they may need to arrange an alternative time if you need a longer chat).

For non-urgent matters each class teacher also has a class email address that parents can use, these are checked every school day by the teacher.

If you are not sure of your class email, take a look at the school website or follow the QR code opposite 😊

