

# Newsletter

## Headlice!!

Please be aware there are headlice about. Be sure to check your Childs hair. For advice on treatment please follow the link below

<https://www.nhs.uk/conditions/head-lice-and-nits/>



## Parking Issues

Please **do not block the driveways** of local residents near school – we are receiving a number of complaints from our neighbours which are all being forwarded to the local council and the Police.



**Road Safety**



## Mentions

**F2KS** Harley and Alfie

**1AS** Ivy-Piper and Arianna

**2JW** Anaya and Manha

**3MS** Anthansh and Riley

**4AO** Hoda and Skye

**5EB** Iyra and Corey

**6EB** Gabriels and Ava

**F2JG** Jax and Jack

**1KE** Aleksa and Sebastian

**2MD** Ruby and Aurora

**3DB** Aneya and Diana

**4CM** Oscar and Krzystof

**5JS** Ryan and Jessica

**6HM** Daniel and Harrison

**F2CA** Maximus and Darius

**1LS** Darcie and Abdelmonim

**2NG** Areeb and Eleen

**3MH** Ethan and Bianca

**4AH** Tomas and Dylan

**5CC** Evie and Imogen

**6LN** Zack and Faith

## Time 2 Chat:

This week we have had a few flakes of snow so this week we would like you to talk to your child about what they would do if they woke up to the scene below.

You could ask questions such as:

What can they see?

Do they think it would be noisy or quiet?

What would they do?

What would they wear?

How would they keep warm?

Who would they choose to play with?

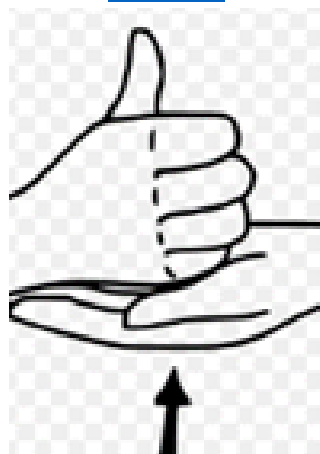
What would the snow feel like?



## Sign of the week:

# Help

<https://www.youtube.com/watch?app=desktop&v=yAvkHt9mlT4>



## EYFS

We have loved all our new children starting nursery! We have been having so much fun making new friends and showing the new children our nursery! All the staff would also like to say a HUGE thank you to parents for being so patient at the end of the day. It's taking a little longer to dismiss the children, but we want to make sure everyone gets to their grown-ups safely!



## KS1 (Years 1 and 2)

Year 1's new vehicle is called 'Location, Location, Location' and they have been set the challenge to create a video that can be sent to local travel agents to encourage people to visit London.

During this vehicle Year 1 will learn about the 4 countries of the UK, their capital cities and will focus on geographical vocabulary. In English our focus text is The Queen's Hat by Steve Antony and this also enables the children to learn about some of the human and features in London. Steve Antony has other books in this series The Queen's Handbag, The Queen's Lift Off and the Queen's Present.



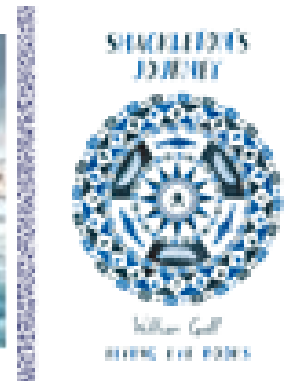
## KS2 (Years 3 and 4)

Year 3 had a visit from a Chef for a question-and-answer session about this career. We learnt about which dishes are easy or hard to cook, secret recipes and ingredients and the benefits of using seasonal fruits and vegetables to create items for a menu. We even got some tips for when we cook our own plant-based burgers later this half-term!



## KS2 (Years 5 and 6)

Year 5 have started a new vehicle this term. In our 'I'm a survivor' vehicle, we are learning about Shackleton's incredible journey to Antarctica. We have researched and presented information about different animals that live in Antarctica, the landscape, the climate and its history. We have also read different books about this amazing story of survival.



## Nursery Rhyme of the week



### If You're Happy and You Know It

If you're happy and you know it, clap your hands.  
If you're happy and you know it, clap your hands.  
If you're happy and you know it  
and you really want to show it,  
If you're happy and you know it, clap your hands.



If you're happy and you know it, stomp your feet.  
If you're happy and you know it, stomp your feet.  
If you're happy and you know it  
and you really want to show it,  
If you're happy and you know it, stomp your feet.



If you're happy and you know it, shout 'Hooray!'  
If you're happy and you know it, shout 'Hooray!'



If you're happy and you know it  
and you really want to show it,  
If you're happy and you know it, shout 'Hooray!'

### Spring term 2023

**We are having School Photos on Wednesday January 25th 2023.**

- Half term - Monday 13 February 2023 to Friday 17 February 2023
- Spring break - Monday 3 April 2023 to Friday 14 April 2023

### Summer term 2023

- Schools open on Monday 17 April 2023
- May Day Bank Holiday - Monday 1 May 2023
- Half term - Monday 29 May 2023 to Friday 2 June 2023
- Schools close - evening Tuesday 25 July 2023

## Attendance

Whole school attendance for last week was 94.19%

The class with the best attendance was 3MH with 98.38% followed by 4AH with 97.58%

### Class Emails

F1 (Mrs Marsden)	<a href="mailto:SRF1@suttonroad.org">SRF1@suttonroad.org</a>	3DB (Miss Brennan)	<a href="mailto:3DB@suttonroad.org">3DB@suttonroad.org</a>
F2KS (Miss Scales)	<a href="mailto:F2KS@suttonroad.org">F2KS@suttonroad.org</a>	3MS (Miss Smith)	<a href="mailto:3MS@suttonroad.org">3MS@suttonroad.org</a>
F2JG (Mrs Goodman)	<a href="mailto:F2JG@suttonroad.org">F2JG@suttonroad.org</a>	3MH (Miss Hutson)	<a href="mailto:3MH@suttonroad.org">3MH@suttonroad.org</a>
F2CA (Miss Airton)	<a href="mailto:F2CA@suttonroad.org">F2CA@suttonroad.org</a>	4AH (Mrs Helliwell-Moore)	<a href="mailto:4AH@suttonroad.org">4AH@suttonroad.org</a>
1KE (Mrs Evans)	<a href="mailto:1KE@suttonroad.org">1KE@suttonroad.org</a>	4CM (Mr Marshall)	<a href="mailto:4CM@suttonroad.org">4CM@suttonroad.org</a>
1AS (Mrs Smith)	<a href="mailto:1AS@suttonroad.org">1AS@suttonroad.org</a>	4AO (Mrs Oakes)	<a href="mailto:4AO@suttonroad.org">4AO@suttonroad.org</a>
1LS (Mrs Stewart)	<a href="mailto:1LS@suttonroad.org">1LS@suttonroad.org</a>	5EB (Mrs Byrne)	<a href="mailto:5EB@suttonroad.org">5EB@suttonroad.org</a>
2NG (Mr Thomson)	<a href="mailto:2NG@suttonroad.org">2NG@suttonroad.org</a>	5CC (Miss Cornell)	<a href="mailto:5CC@suttonroad.org">5CC@suttonroad.org</a>
2MD (Mrs Dixon)	<a href="mailto:2MB@suttonroad.org">2MB@suttonroad.org</a>	5JS (Mrs Skevington)	<a href="mailto:5JS@suttonroad.org">5JS@suttonroad.org</a>
2JW (Mr Wakeland)	<a href="mailto:2JW@suttonroad.org">2JW@suttonroad.org</a>	6EB (Mrs Blakeley)	<a href="mailto:6EB@suttonroad.org">6EB@suttonroad.org</a>
		6HM (Mrs Mitchell)	<a href="mailto:6HM@suttonroad.org">6HM@suttonroad.org</a>
		6LN (Mr Fletcher -Newbold)	<a href="mailto:6LN@suttonroad.org">6LN@suttonroad.org</a>

### Ofsted/CQC local area SEND surveys

As you may be aware the Ofsted / CQC local area SEND inspection of Nottinghamshire started recently and the views of all stakeholders are being requested. Here is a link which takes you directly to the links for three surveys: children and young people with SEND; parents and carers of children and young people with SEND; and practitioners working with children and young people with SEND for anyone wishing to comment.

<https://ofsted.smartsurvey.co.uk/p/AreaSend/10252861>

